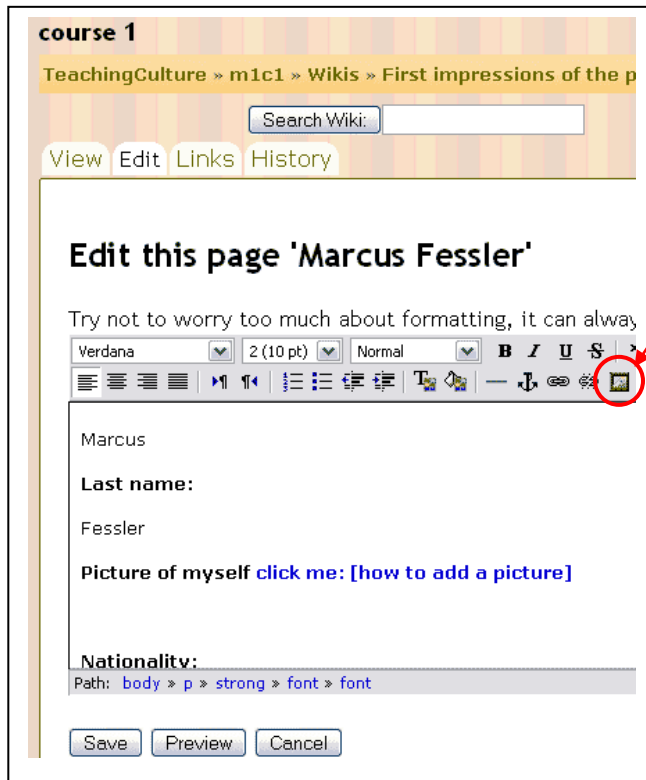


How to add a picture to the moodle Wiki

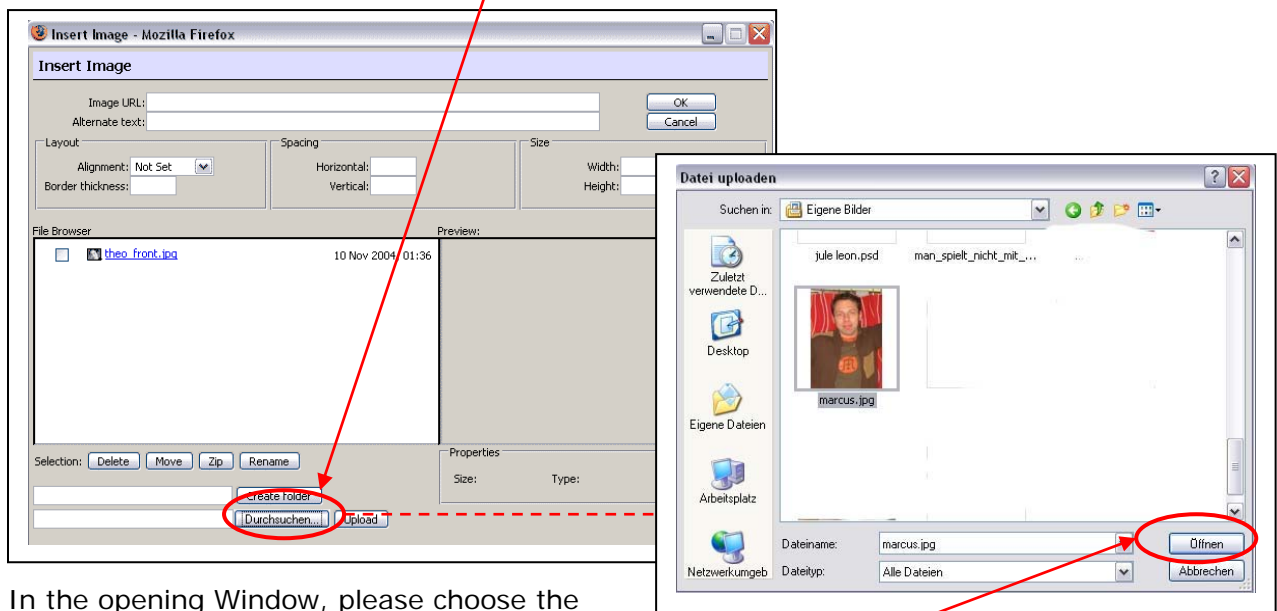


First of all we start in the Edit mode of a Wiki page.

If you want to add a picture, please **place the cursor where the picture should be visible.**

Now click "Insert Image" and The following window will be viewable.

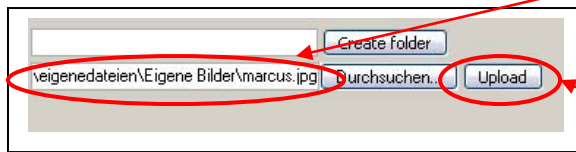
Choose your image while you click "Durchsuchen"



In the opening Window, please choose the picture you want to add from your local computer.

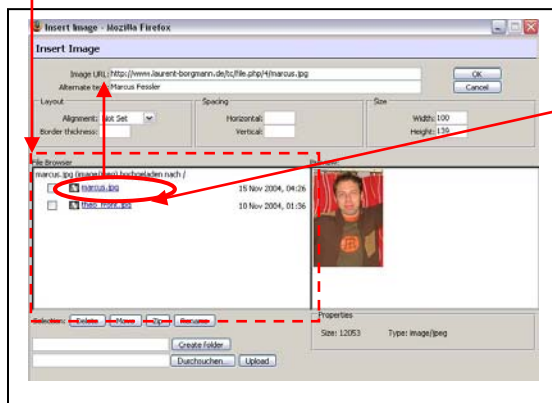
Choose with a left mouse click and after that press "Open"

The local path of your picture is now viewable in the Moodle upload field.



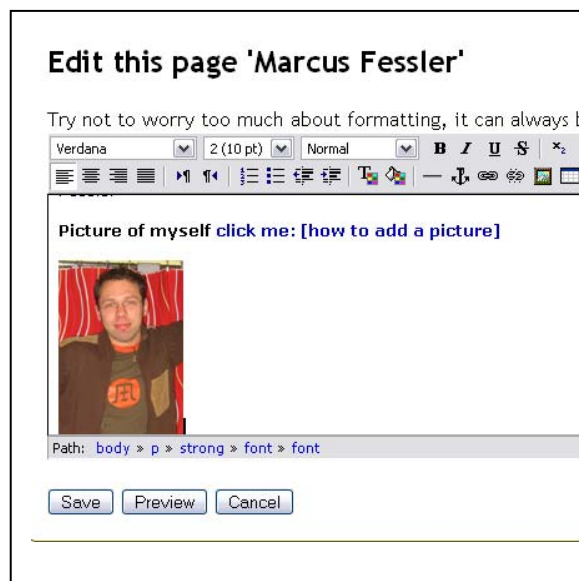
To transfer the picture to the Moodle Wiki, please click "upload"

After the upload the name of the pic is visible in the file browser area.



Please click on the name of the upload picture and the URL will be inserted in the "Image URL BOX".

If everything is ok, add a "Alternate Text" for the pic (free, second line in the "Insert Image" box) and press OK.



Now the picture is added in the Wiki, you only should press "Save" to save the whole Wiki page with text and added picture.